

# 2022 Public Health Law Summit: Climate Change and Health Equity

Local Governments and Hospitals Building Resilient  
Communities Together

October 13, 2022



# Agenda

- ▶ Health Care Collaborative: Linkages with climate change resilience and equity
- ▶ Southeast Florida Regional Climate Change Compact: Integrating public health into climate resiliency planning
  - ▶ Climate Compact Overview
  - ▶ Regional Climate Action Plan - Public Health
  - ▶ Regional Climate Action Plan - Equity
- ▶ Moderated Discussion - Best practices and future opportunities
- ▶ Audience Q&A

# Health Care



# Without Harm



---

Our mission is to transform health care worldwide so that it reduces its environmental footprint, becomes a community anchor for sustainability and a leader in the global movement for environmental health and justice.

---

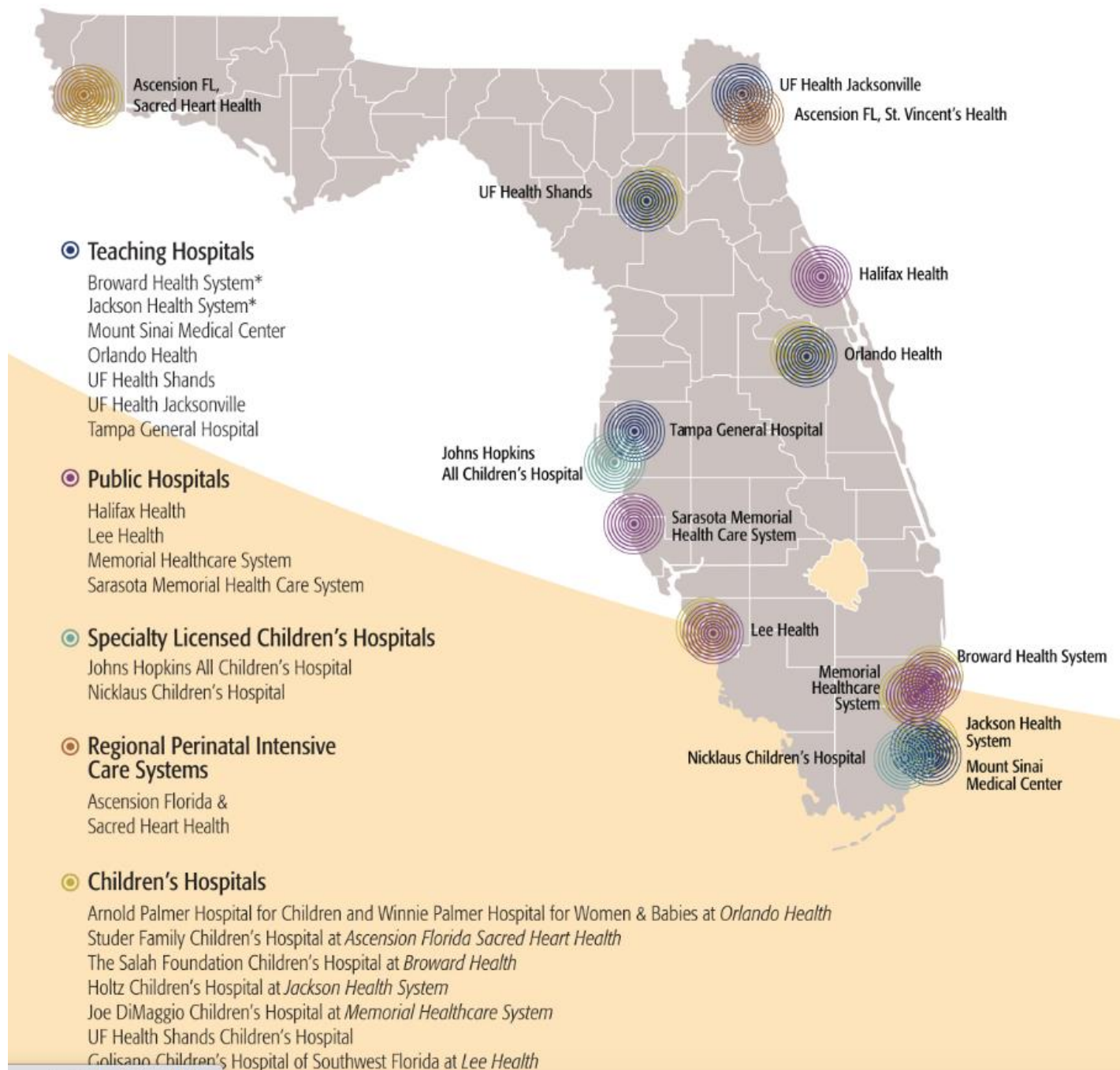






# **Southeast Florida Health Care Resilience Collaborative**





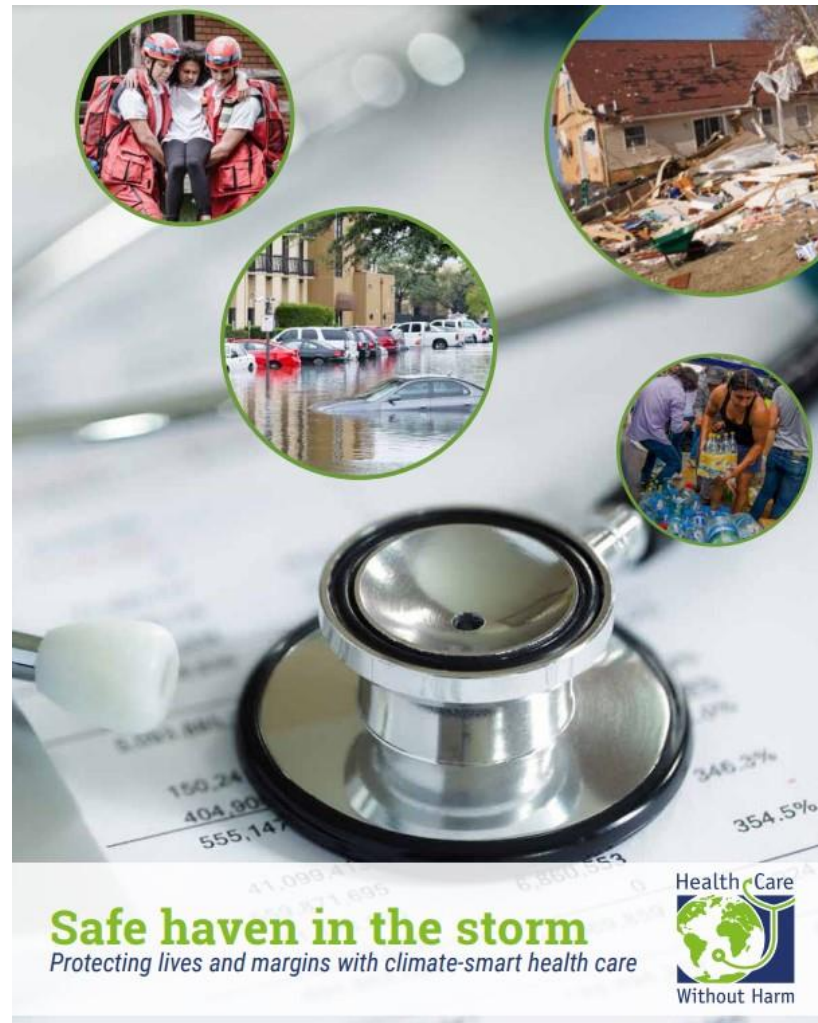
Deltares Cascading impacts of flooded infrastructure

Introduction Methodology The 2017 and 2060 events Cascade impact risk assessment Evaluating adaptation measures Conclusions Project Team & Credits





# SAFE HAVEN IN THE STORM



Exploring New Federal Funding  
Opportunities from the Bipartisan  
Infrastructure Deal

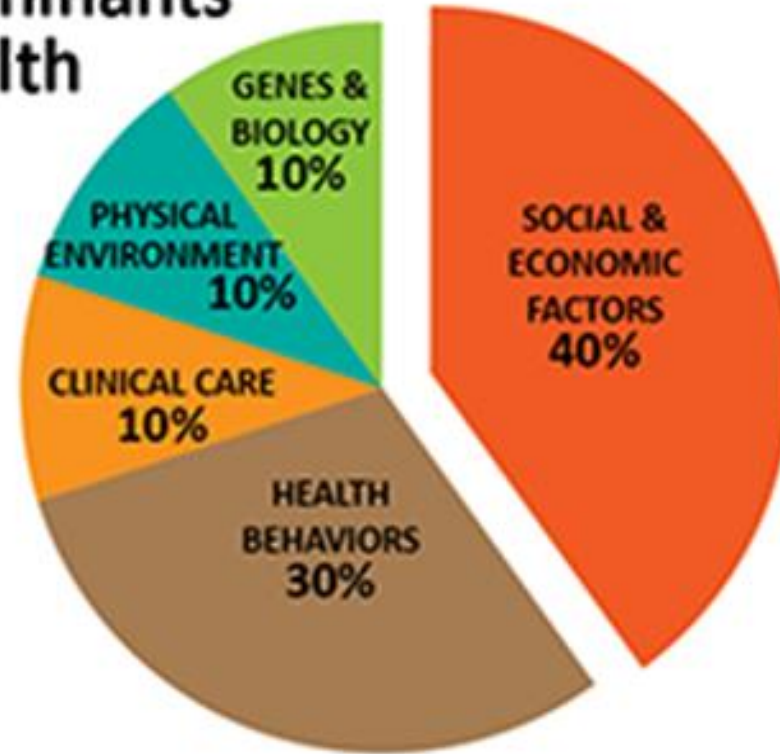


**RACE**  
**TO ZERO**



# Climate Change, Health, and Equity

## Determinants of health



Tarlov AR. *Public policy frameworks for improving population health*. Ann N.Y Acad Sci 1999; 896: 281-93.



# Energy Efficiency

Energy Solutions

## CHP and Project Partners Launch Healthy Homes Pilot Program in Northern Virginia








**GREEN CARS FOR KIDS**

-driving kids to better health with electric vehicles-


# Heat Health Awareness and Promotion

MIAMI-DADE COUNTY DEPARTMENT OF REGULATORY & ECONOMIC RESOURCES

Protect yourself from  
**EXTREME HEAT**








**Who is Most at Risk?**




- ▶ People who work or are active outdoors
- ▶ Anyone who does not have access to air conditioning
- ▶ Infants and children
- ▶ Pregnant women
- ▶ Adults 65 and older
- ▶ People with chronic illnesses

**HEAT CHECK**  
**What Can You Do?**



- ▶ **STAY COOL**
  - If you don't have air conditioning, go somewhere that does a few hours each day.
  - Wear light-colored, light-weight clothing that breathes.
  - Take cool showers.
  - Avoid direct sun.
- ▶ **STAY HYDRATED**
  - Drink more than usual. Water is best!
  - On regular days, drink 8 glasses, and more when it's hot.
- ▶ **CHECK ON NEIGHBORS AND FRIENDS**
  - Create a buddy system.
  - Focus on people at high risk.
  - Check on the elderly and anyone who doesn't have AC.
- ▶ **STAY INFORMED**
  - Check local news and weather reports.
  - Be alert on extreme heat days that "feel like" 100 degrees or more.
  - Learn the warning signs of heat illness, including: heavy sweating, clammy skin, cramps, tiredness, dizziness, headache, nausea, confusion, high body temperature.



305 MIAMI-DADE COUNTY

For more information, visit [miami.gov/heat](http://miami.gov/heat)

## Resources

- A. [Physician Network](#)
- B. [Practice Greenhealth](#)
- C. [Health Care Without Harm](#)
- D. [Climate and Health](#)
- E. [Primary Protection: Enhancing Health Care Resilience for a Changing Climate](#)
- F. [Safe Haven in the Storm](#)
- G. [Miami-Dade Extreme Heat Toolkit](#)
- H. [Green Cars for Kids](#)

### US climate and health initiatives

- 1. [The Health Care Climate Challenge](#)
- 2. [Health Care Climate Council](#)
- 3. [Climate Action Playbook for Hospitals](#)
- 4. [Cool Food Pledge](#)
- 5. [Nurses Climate Challenge](#)



# The Southeast Florida Regional Climate Change Compact





# Climate change

## Vulnerability

### Vulnerability factors

- Demographic factors
- Geographic factors
- Biological factors & health status
- Sociopolitical conditions
- Socioeconomic factors

### Exposure pathways

- Extreme weather events
- Heat stress
- Air quality
- Water quality and quantity
- Food security and safety
- Vector distribution & ecology

### Health system capacity & resilience

- Leadership & governance
- Health workforce
- Health information systems
- Essential medical products & technologies
- Service delivery
- Financing

## Climate-sensitive health risks

### Health outcomes



Injury and mortality from extreme weather events



Heat-related illness



Respiratory illness



Water-borne diseases and other water-related health impacts



Zoonoses



Vector-borne diseases



Malnutrition and food-borne diseases



Noncommunicable diseases (NCDs)



Mental and psychosocial health

### Health systems & facilities outcomes



Impacts on healthcare facilities



Effects on health systems

Image credit: World Health Organization

# Climate Trends and Predictions for Southeast FL

- ▶ Sea level rise
- ▶ Rising temperatures
- ▶ Extreme rainfall and drought
- ▶ Coastal and inland flooding
- ▶ Increased storm intensity
- ▶ Beach erosion
- ▶ Saltwater intrusion
- ▶ Ocean acidification
- ▶ Vector-borne diseases



*Slide credit: Jennifer Jurado, Broward County*

# The Compact is a

- ▶ regional collaborative: *Broward, Palm Beach, Miami-Dade, and Monroe Counties, plus cities, nonprofits, other stakeholders*
- ▶ document
- ▶ platform for policy and advocacy
- ▶ model of governance
- ▶ set of working relationships & collective efforts
- ▶ community of practice
- ▶ network
- ▶ regional resource





# The Compact is a network

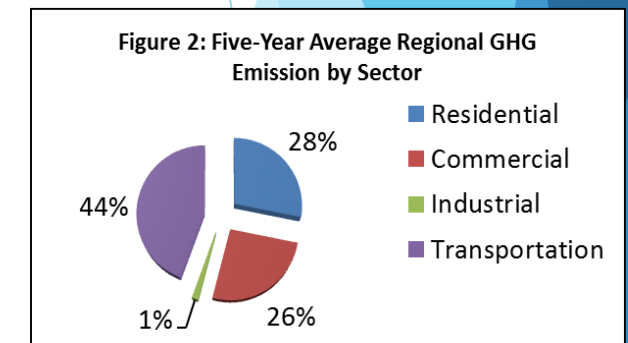
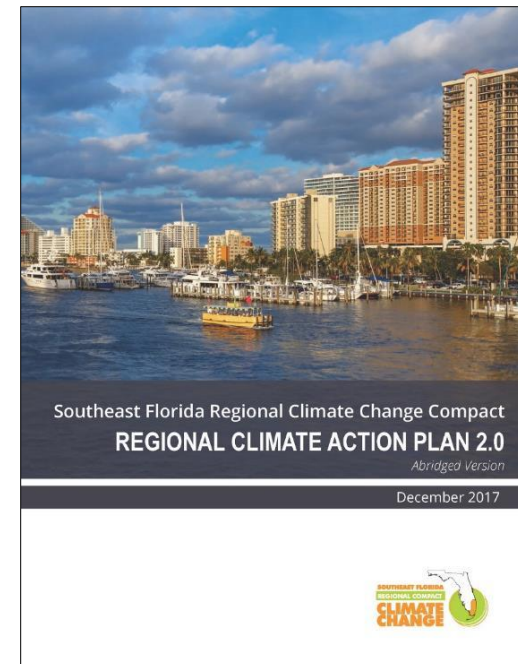
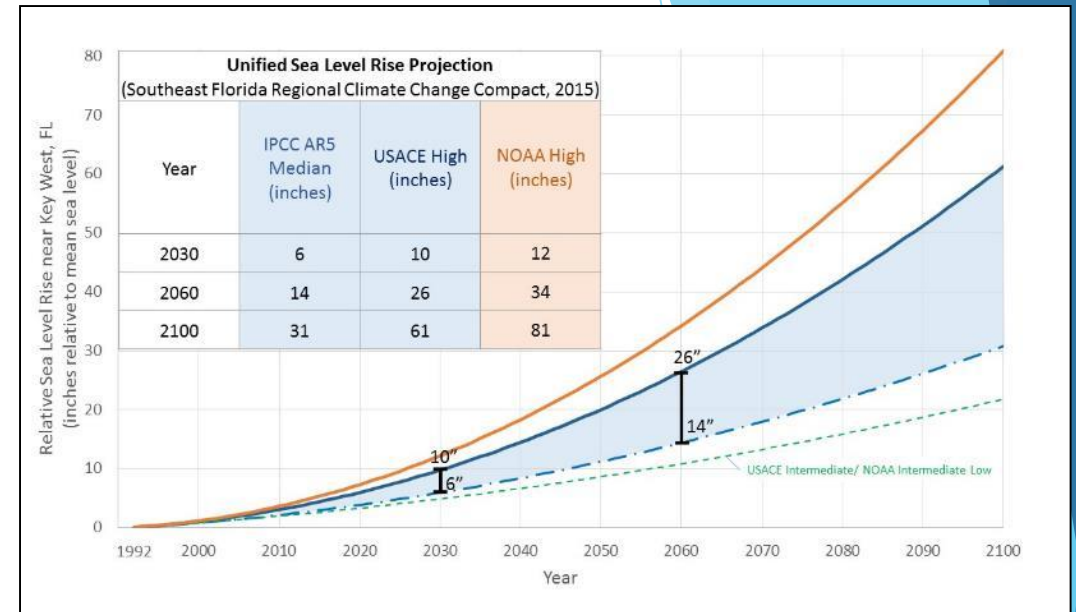
- ▶ Compact Leadership Committee
  - ▶ Knowledge exchanges
  - ▶ Input sessions
  - ▶ Workshops
  - ▶ Summits
    - ▶ [www.Broward.org/Climate](http://www.Broward.org/Climate)
- ▶ Policy and advocacy
  - ▶ Similar collaboratives in FL and nationally
  - ▶ Florida Climate Institute
  - ▶ Local/state/national/international conferences





# The Compact is a regional resource

- ▶ Baseline documents
  - ▶ Greenhouse gas emissions inventory
  - ▶ Unified Sea Level Rise Projection (2011, 2015, 2019)
  - ▶ Vulnerability analysis
- ▶ Regional Climate Action Plan (2012, 2017, 2022)
- ▶ Guidance documents

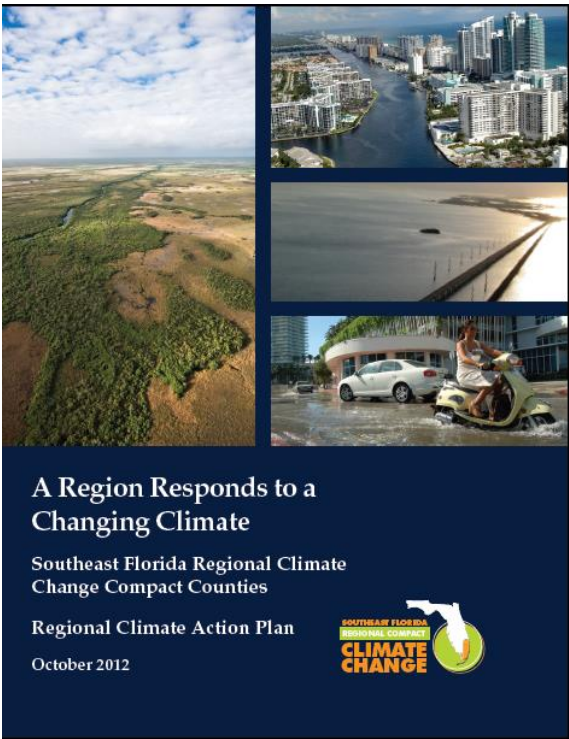


# The Compact is a regional resource

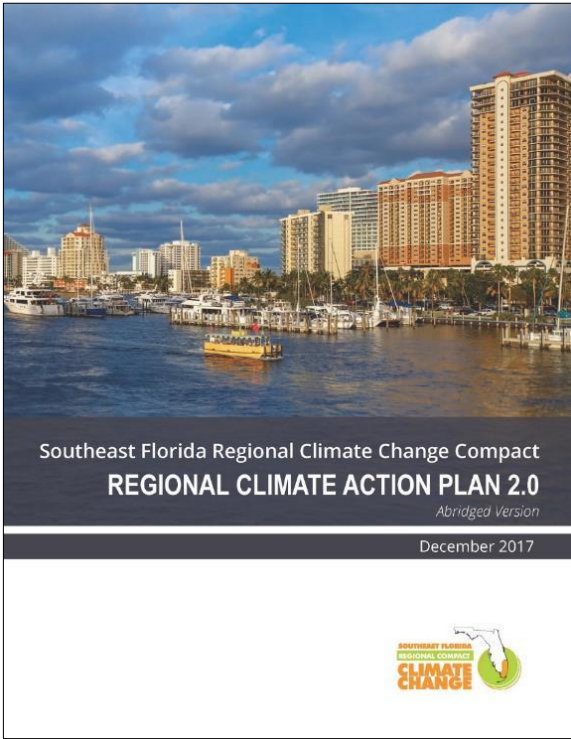


# Regional Climate Action Plan

2012



2017



2022



# Regional Climate Action Plans

## 2012 and 2017

- ▶ Agriculture
- ▶ *Compact Coordination*
- ▶ Energy and Fuel
- ▶ Natural Systems
- ▶ *Public Health*
- ▶ Public Outreach and Engagement
- ▶ Public Policy Advocacy
- ▶ *Regional Economic Resilience*
- ▶ Risk Reduction and Emergency Management
- ▶ *Social Equity*
- ▶ Sustainable Communities and Transportation
- ▶ Water

## 2022

- ▶ Agriculture
- ▶ ~~*Compact Coordination*~~
- ▶ Energy
- ▶ Natural Systems
- ▶ Public Health
- ▶ Informed and Engaged Communities
- ▶ Public Policy Advocacy
- ▶ Regional Economic Resilience
- ▶ Risk Reduction and Emergency Management
- ▶ Equity
- ▶ Sustainable Communities and Transportation
- ▶ Water





# RCAP 3.0 - Public Health Chapter Major Themes



# PH-1 Communicate climate-health risks



**Kilès Ki Gen Pi Gwo Risk?**

- ▶ Moun ki travay oswa ki fè aktivite deyò
- ▶ Moun ki pa gen aksè a klimatizè
- ▶ Tibebe ak timoun
- ▶ Fanm ansent
- ▶ Adilt 65 ane oswa plis
- ▶ Moun ki gen maladi kwonik

## Staying Safe in the Heat

- ☀ Limit Outdoor Activities
- ☀ Drink Plenty of Water
- ☀ Avoid Alcohol
- ☀ Wear Light Clothing
- ☀ Wear Sunscreen
- ☀ Work Outdoors Early or Very Late in the Day



[weather.gov/heat](https://weather.gov/heat)

**HEAT CAN BE DANGEROUS  
PREGNANT PEOPLE FACE EXTRA RISK**

KNOW THE SIGNS | FIND RESOURCES

[WOMENSFUNDMIAMI.ORG/HEATHEALTH/](https://WOMENSFUNDMIAMI.ORG/HEATHEALTH/)  
EMERGENCY: CALL 911

 **THE WOMEN'S FUND**  
MIAMI-DADE  
WOMEN STRONG = WORLD STRONG®

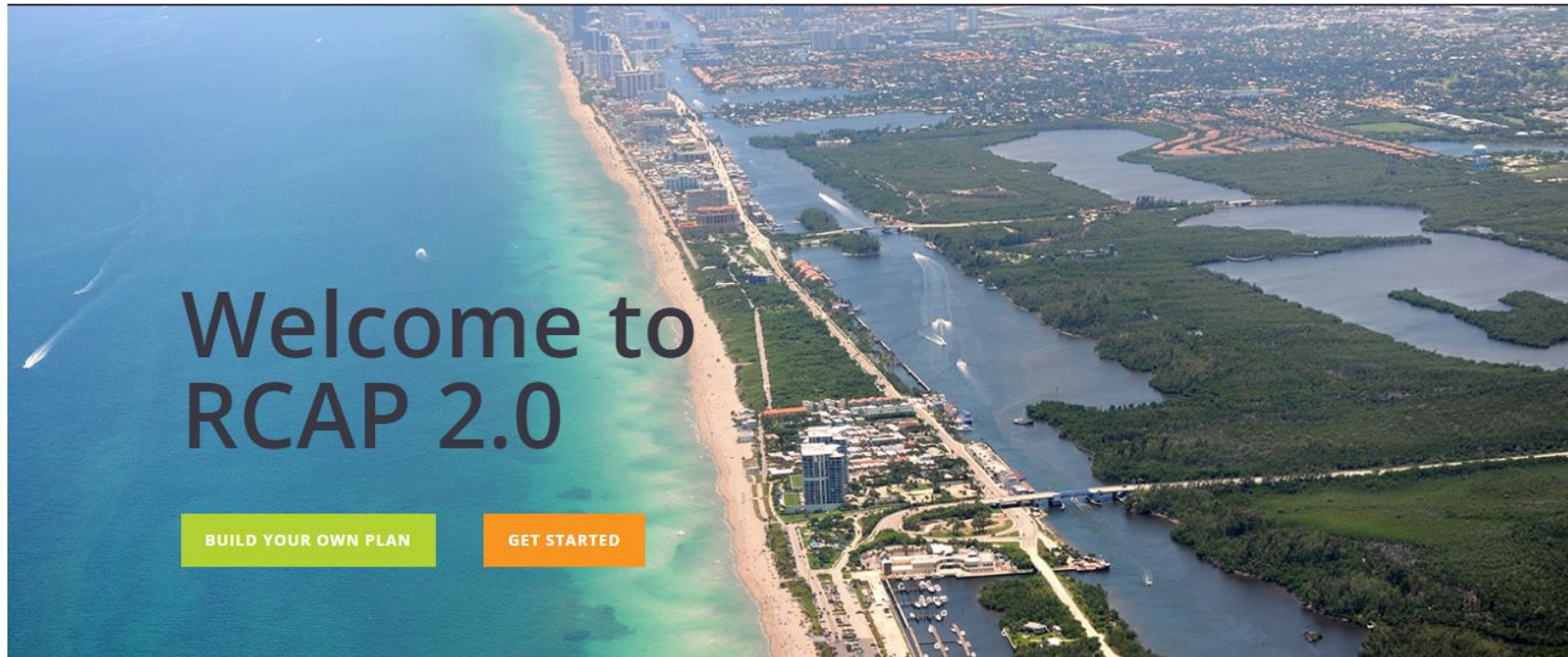
 **Baptist Health**

 **THE CITY OF MIAMI**

 **MIAMI-DADE COUNTY**



## PH-2 Integrate climate-health data into climate plans





# PH-3 Address heat risks to frontline communities

## WHO:



Children



Pregnant Women



Older adults



Outside workers



People with disabilities

## WHERE:



Houses with  
little to no AC



Construction  
worksites



Cars



# PH-4 Collect and disseminate climate-related health data



Florida Department of Health  
Bureau of Community Health Assessment  
Division of Public Health Statistics and Performance Management

## County Health Dashboard

Age and Gender

Race

Hispanic Population

Socioeconomic Indicators

Selected Causes of Death

Reportable and Infectious Diseases

Maternal & Child Health

Behavioral Risk Factors

Social & Mental Health

Health Resource Availability

Click Display Report after making selections.

Select County:

Select Year:

[Display Report](#)

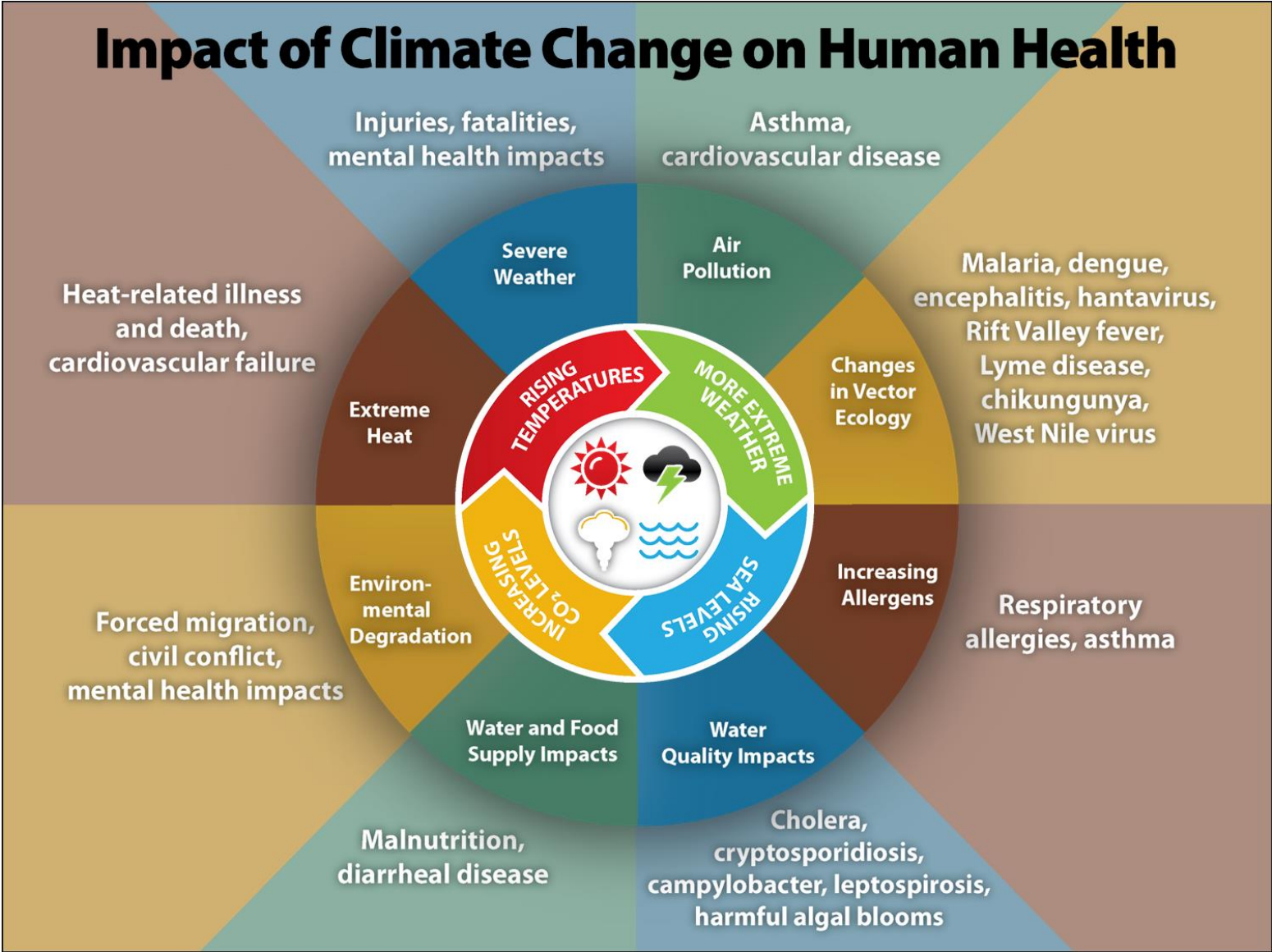
[Print/PDF](#) [Export to Excel](#)

### Maternal & Child Health, Palm Beach County, Florida

		County					State
Indicator(3-Yr Figures)	Data Year	White	Black	Hispanic	All Races	County Quartile 1=most favorable 4=least favorable	State
Births							
<a href="#">Average Number of Births Each Year</a>	2018-20	9,515	4,124	4,737	14,638	<div>4</div>	217,054
<a href="#">Births to Mothers Ages 15-44 per 1,000 Female Population</a>	2018-20	56.9	64.4	67.9	59.0	<div>2</div>	55.8
<a href="#">Births to Mothers Ages 10-14 per 1,000 Female Population</a>	2018-20	0.4	0.2	0.7	0.3	<div>3</div>	0.2
<a href="#">Births to Mothers Ages 15-19 per 1,000 Female Population</a>	2018-20	13.6	17.9	27.7	14.3	<div>1</div>	16.0
<a href="#">Percent of Births to Unwed Mothers</a>	2018-20	39.3	58.7	52.3	43.9	<div>1</div>	46.7
Infant Deaths							
<a href="#">Infant Deaths (0-364 days) per 1,000 Births</a>	2018-20	2.8	7.9	4.0	4.5	<div>1</div>	6.0
<a href="#">Neonatal Deaths (0-27 days) per 1,000 Births</a>	2018-20	1.9	5.6	3.0	3.2	<div>2</div>	4.0
<a href="#">Postneonatal Deaths (28-364 days) per 1,000 Births</a>	2018-20	0.8	2.3	1.0	1.3	<div>1</div>	1.9
Low Birth Weight							
<a href="#">Percent of Live Births Under 1500 Grams</a>	2018-20	1.0	2.7	1.3	1.5	<div>2</div>	1.6



# PH-5 Enhance understanding of climate-health correlations



## PH-06 Improve resilience of healthcare sector and communities served

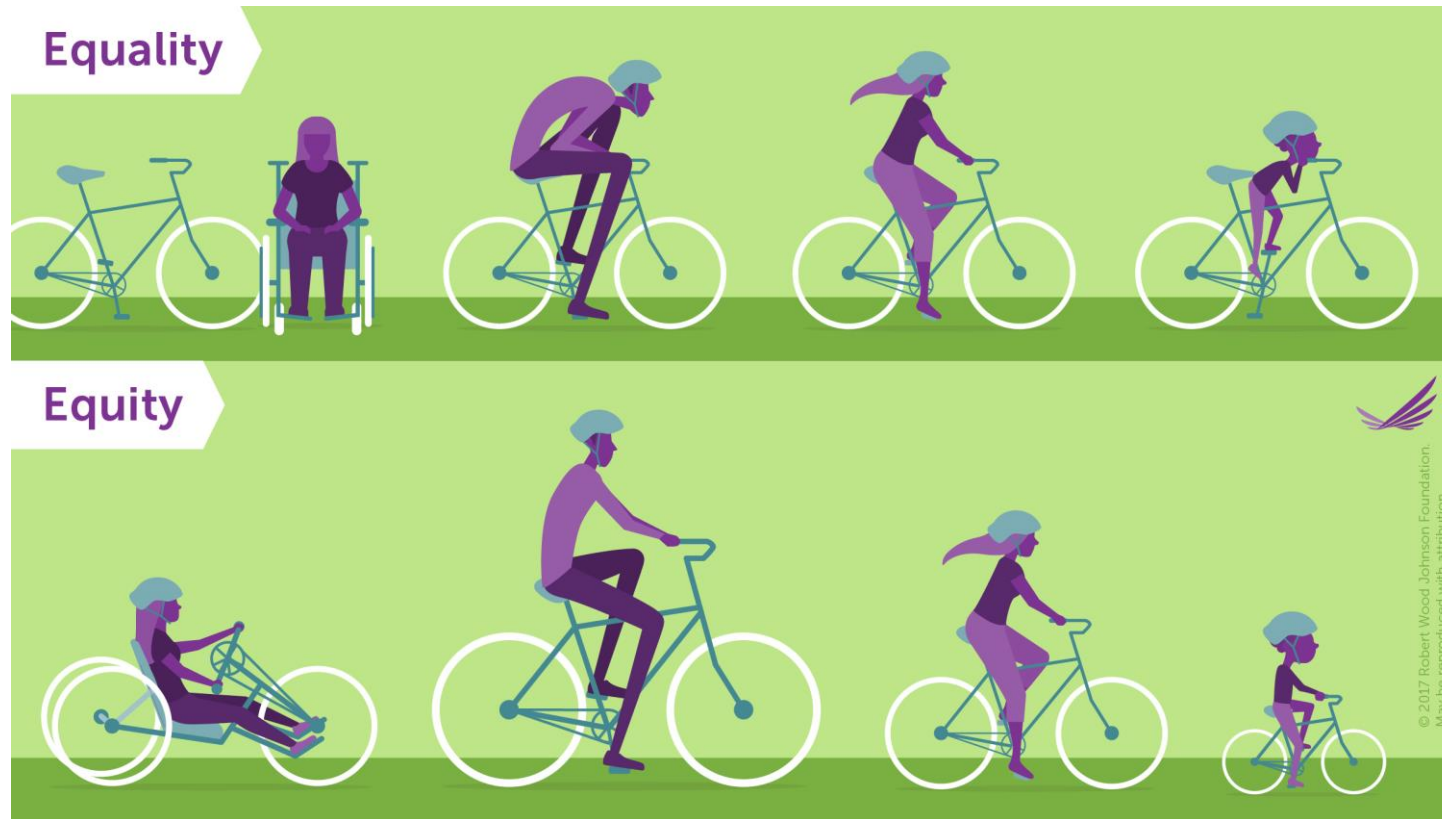


# RCAP 3.0 - Equity Chapter Major Themes

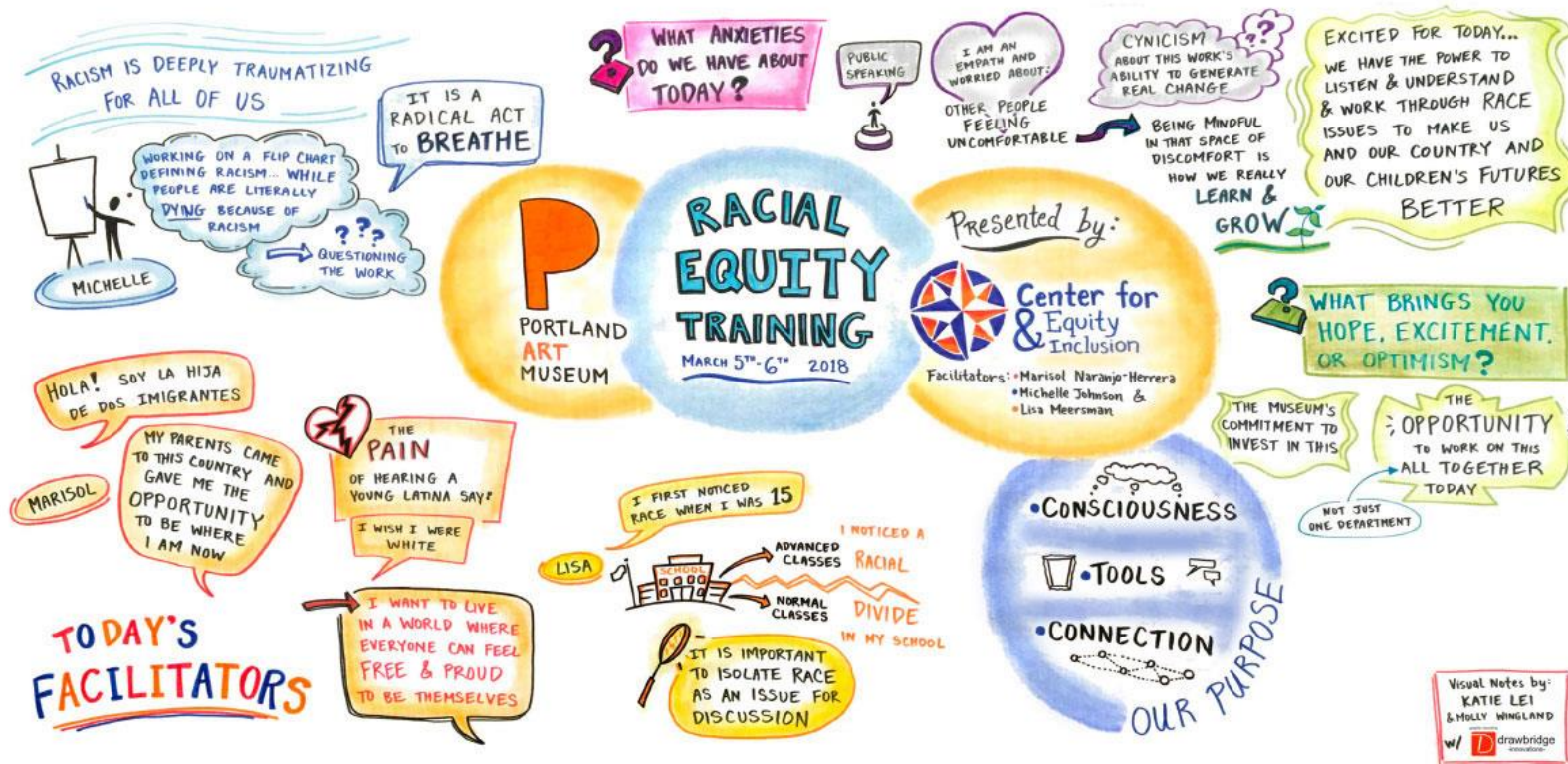




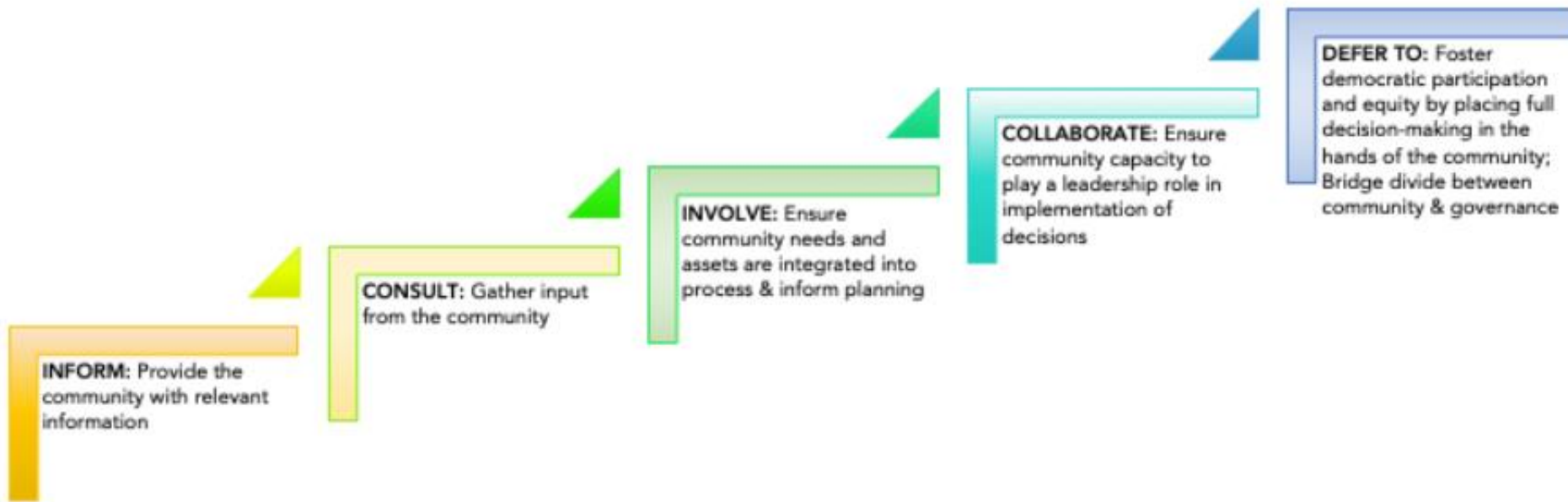
# EQ- 1 Ensure equitable processes and outcomes in climate change action



# EQ- 2 Build intersectional climate equity knowledge



## EQ- 3 Build the capacity of frontline communities



EQ-4 Develop partnerships with the community to co-create solutions





## EQ-5 Foster ongoing dialogue between the community and local governments



## EQ-6 Integrate social vulnerability data



## EQ-7 Prioritize investments that simultaneously address equity and climate





## EQ-8 Address economic development in tandem with climate change





# Contact Information

- ▶ Dr. Catherine Toms

- ▶ Health Care Without Harm

- ▶ [ctoms@hcwh.org](mailto:ctoms@hcwh.org)

- ▶ (205) 568-0175

- ▶ Jason Liechty

- ▶ Broward County Resilient Environment Department

- ▶ [jliechty@broward.org](mailto:jliechty@broward.org)

- ▶ (954) 519-0310

- ▶ Karina Castillo

- ▶ Miami-Dade County Office of Resilience

- ▶ [Karina.Castillo@miamidade.gov](mailto:Karina.Castillo@miamidade.gov)

- ▶ (305) 775-5794

- ▶ Megan Houston

- ▶ Palm Beach County Office of Resilience

- ▶ [mshouston@pbcgov.org](mailto:mshouston@pbcgov.org)

- ▶ (561) 681-3812

