

Community Determined Policies and Intervention: Approaches to Climate Change and Health Equity

September 17, 10:45 AM – 12:00 PM



Climate and Health Adaptation Modeling Project (CHAMP)

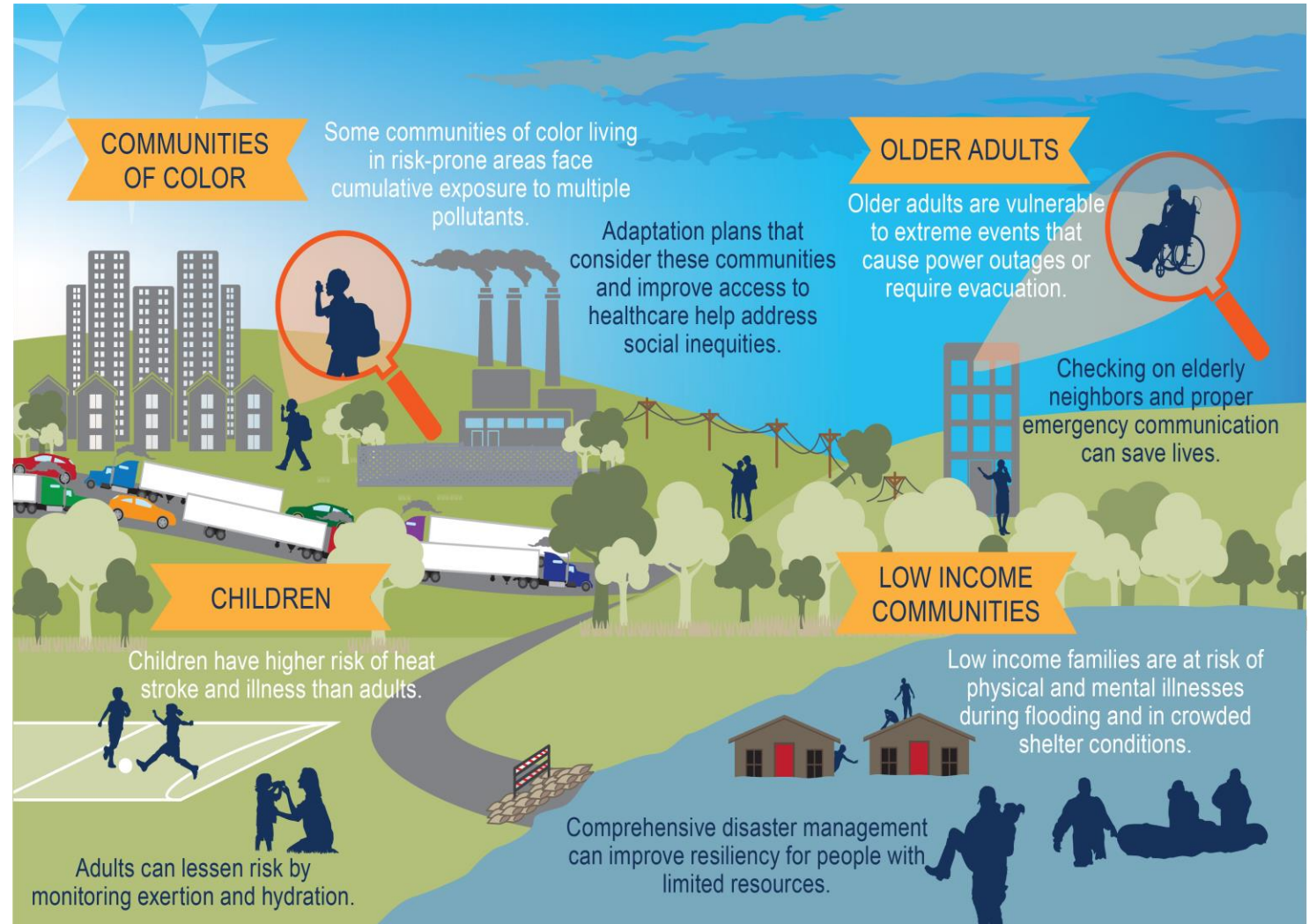
2025 Public Health Law Conference

September 12, 2025

Background: Who is vulnerable to heat?

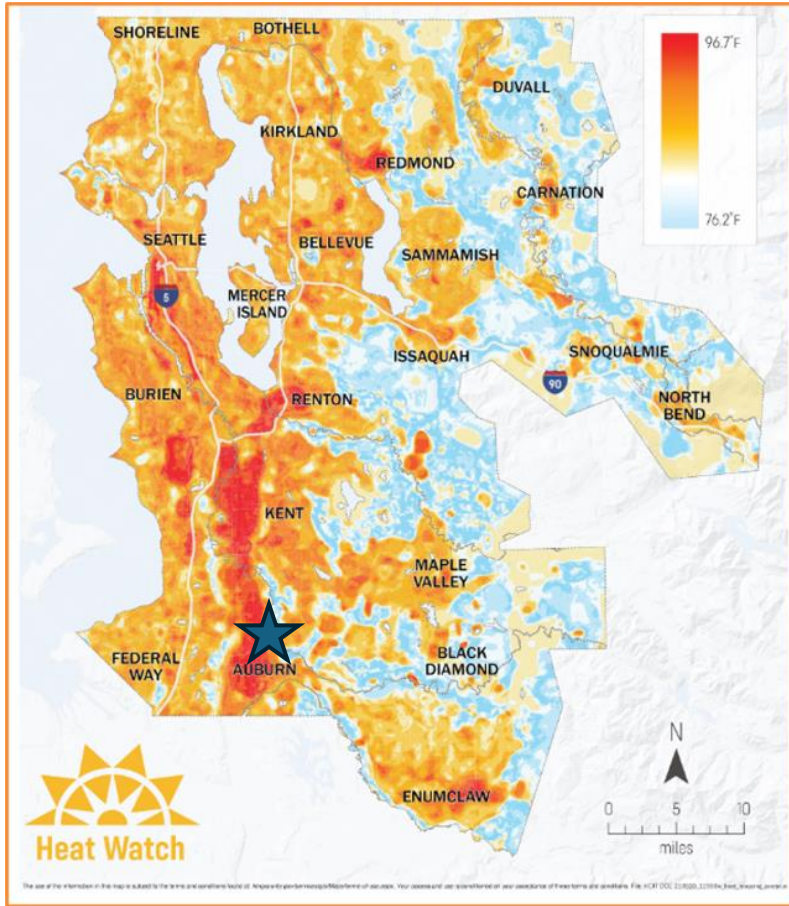
ALSO:

- **Pregnant people**
- **Outdoor workers**
- **People with chronic conditions**
- **People with disabilities**
- **People experiencing homelessness**
- **And more...**

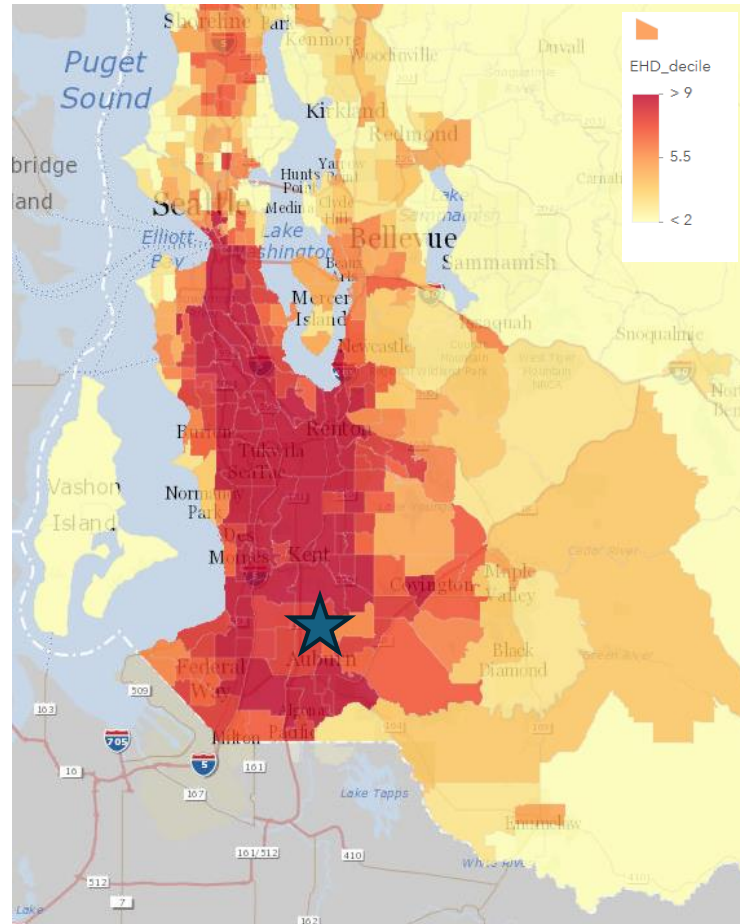


Source: [National Climate Assessment Figure 14.2](#)

Background: Why focus on heat?



2020 KC Heat Mapping: Evening Study Results



[WA DOH Environmental Health Disparities Map Calculated for King County](#)

- Puget Sound area is projected to be 5.5°F warmer by 2050
- Western WA is less prepared to adapt to heat than other parts of country
- Impacts not equitably distributed
- Heat islands in King County can result in temps 20°F hotter than in other areas of the county

Climate and Health Adaptation Modeling Project ("CHAMP")

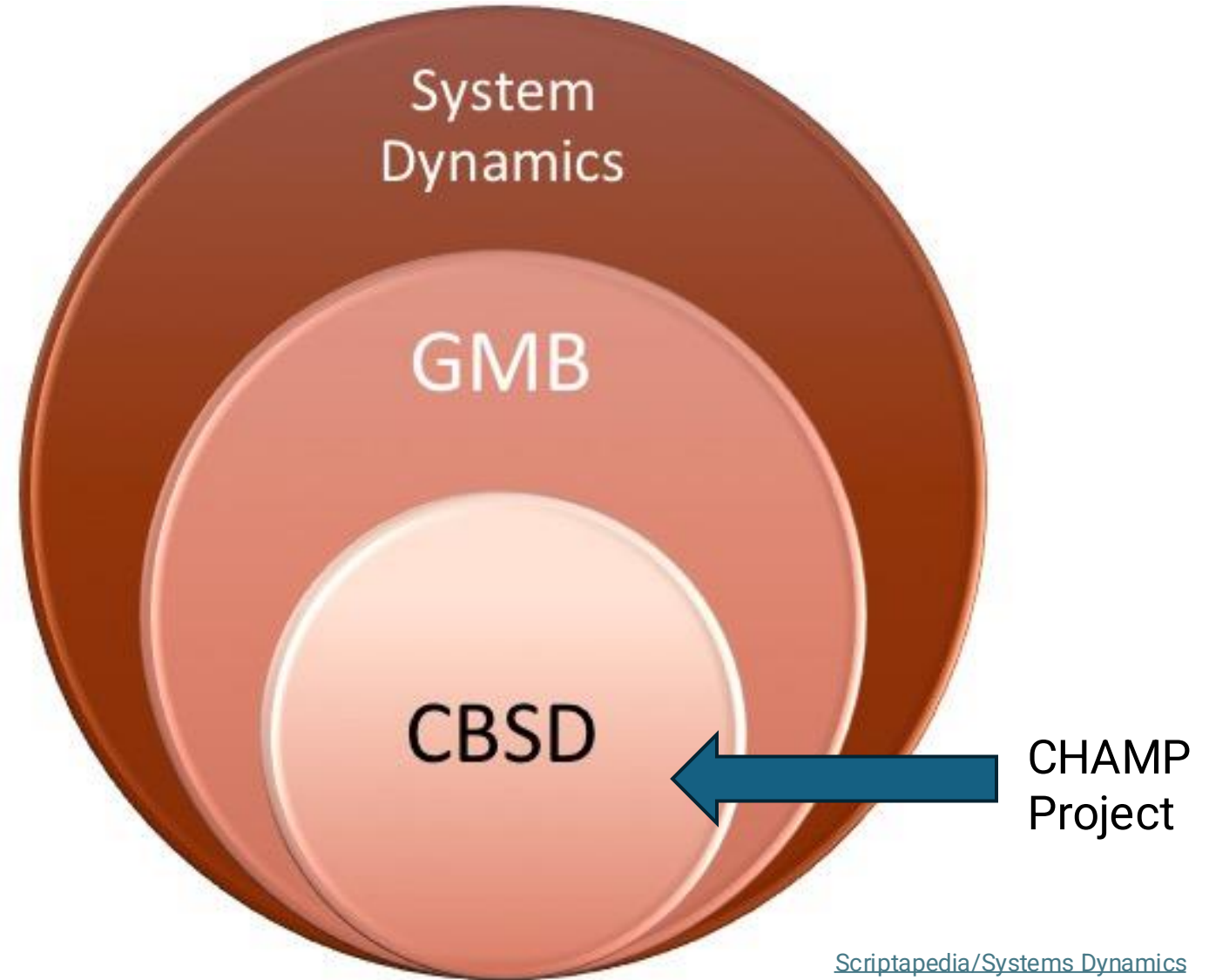


- City of Auburn, WA
- 15-member workgroup comprised of City of Auburn community members
- 6 half-day workshops between July 2024 and April 26, 2025
- Co-developed heat adaptation solutions using participatory group model-building approach



Methods

- **Systems thinking /Systems Dynamics**
holistic approach to understand causality between variables in a system / quantified
- **Participatory Group Model-Building (GMB)**
engage collaborators from different sectors in systematic process to understand and address complex issues
- **Community-based Systems Dynamics (CBSD)**
engages community in the GMB / systems dynamics process





Zoom



**Workshop 1 (July):
Laying the Foundation**

**Workshop 3 (Sept):
Mapping the Variables**

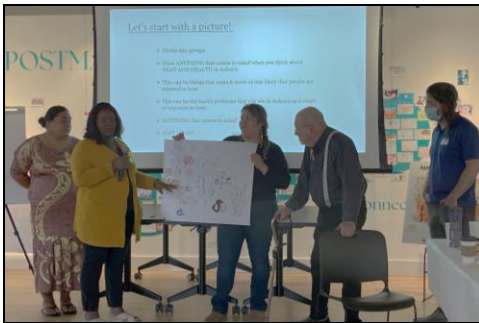
**Workshop 4.5 (Feb):
APEASE Overview**

**Workshop 6 (April):
Finalizing Interventions**

**Workshop 2 (Aug):
Defining the Problem**

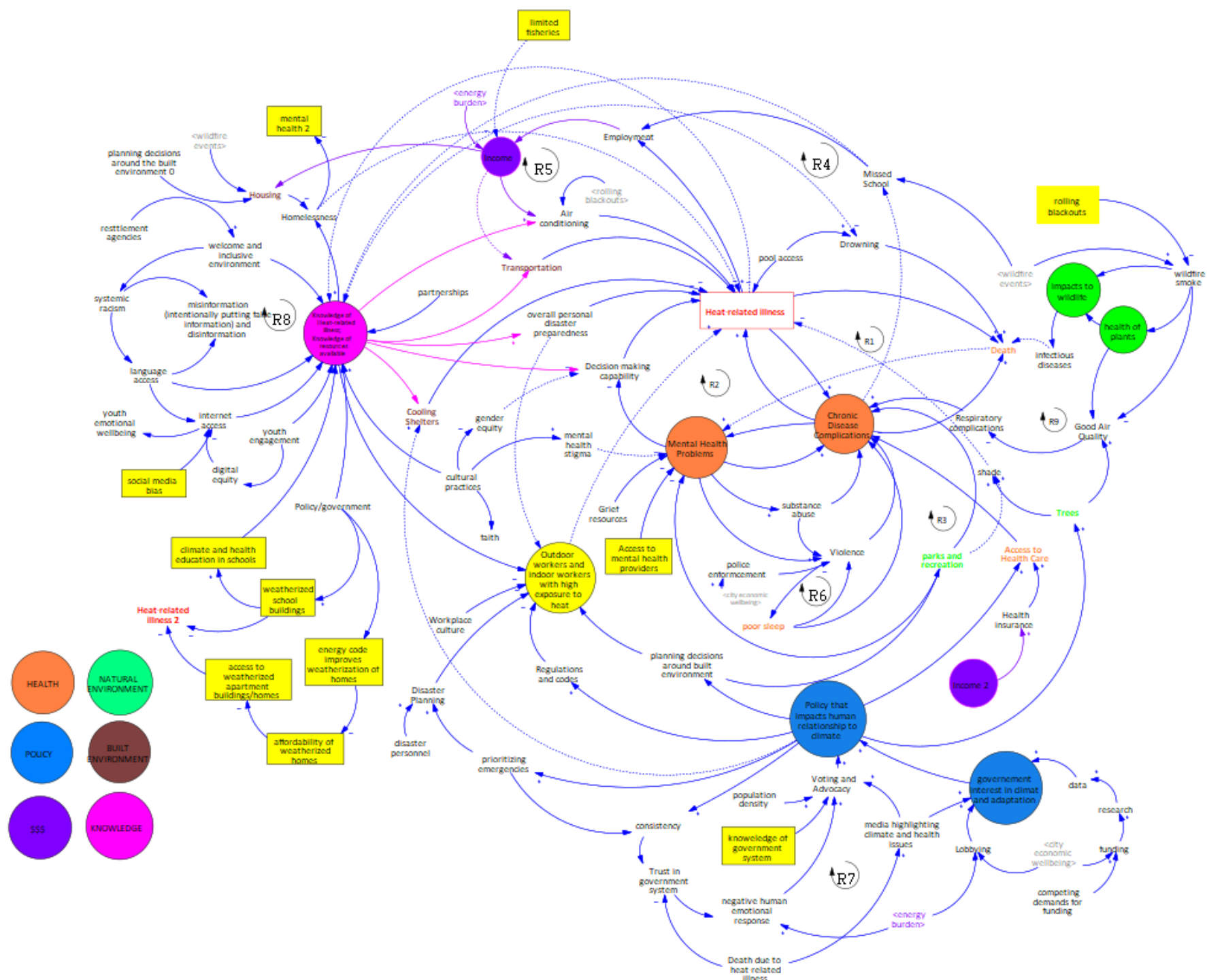
**Workshop 4 (Dec):
Emerging Themes**

**Workshop 5 (March):
Prioritizing Solutions**



July 2024

April 2025



Results: Emerging Themes



Overall health & wellbeing
and heat-related illness



Socioeconomic
status & heat-related
illness



Knowledge about heat &
resources to support heat
management

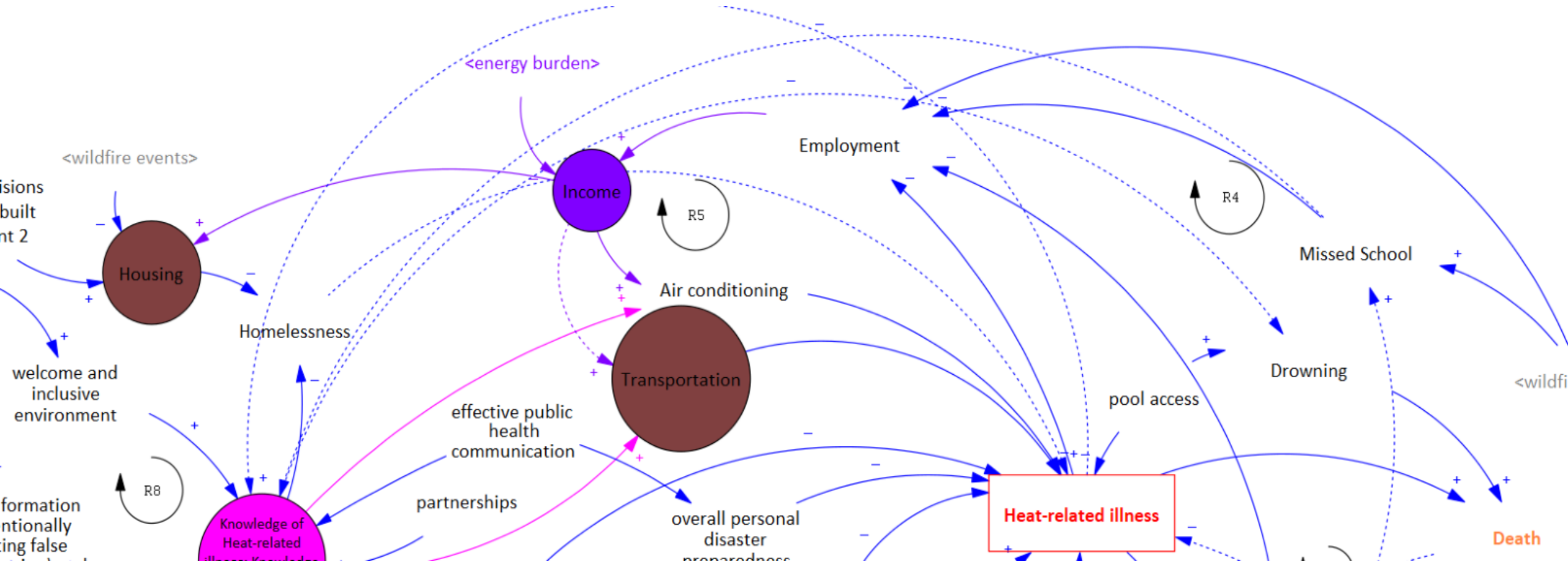


Wellbeing of the
natural environment
& heat-related illness



Role of policy &
government in heat-
related illness

Results: Emerging Theme Example (Socioeconomic Status + Heat Illness)



Income is impacted by employment → impacted when one is sick with heat-related illness or when children miss school.

Income → impacts access to **built environment** features like housing, air conditioning, transportation which reduce exposure to heat.

Energy burden impacts → **Income**

Prioritize Solutions

"APEASE" Framework:

- Acceptability
- Practicability
- Effectiveness
- Affordability
- Spill-over Effects
- Equity



SOLUTION

DESCRIPTION



Cool Kits for Unhoused

Distribute cool kits including protective items like bottled water, cooling towels, sun protective clothing, and sunscreen



Energy Assistance

Programs that help alleviate the cost of energy for low-income households



Cooling Center Extended Hours

Keeping cooling centers open beyond 8:30am to 5pm working hours so that people can go and cool down during evening hours when it is still hot



Heat Education for Workers

Sharing information on heat risk and strategies to mitigate that risk for workers exposed to heat and ensuring they know their rights as a worker



Community Navigator Programs

Community navigators serve as cultural translators and help individuals navigate available social support services



Community Gardens

Increase community gardens to prevent chronic disease and to increase green space



Host Opportunity Circles

Bring individuals together to discuss different stories and learn from each other on specific topics

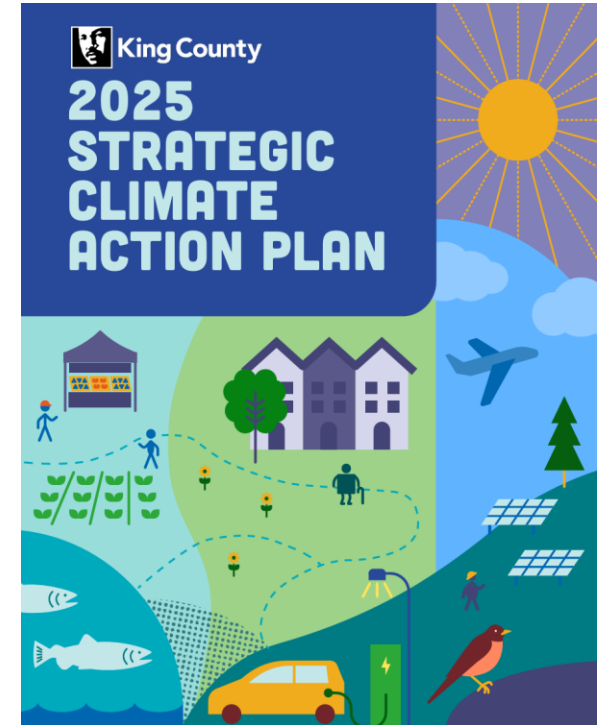
Climate Aligned King County Strategic Plans



2024-2029 Public Health –
Seattle & King County
Strategic Plan



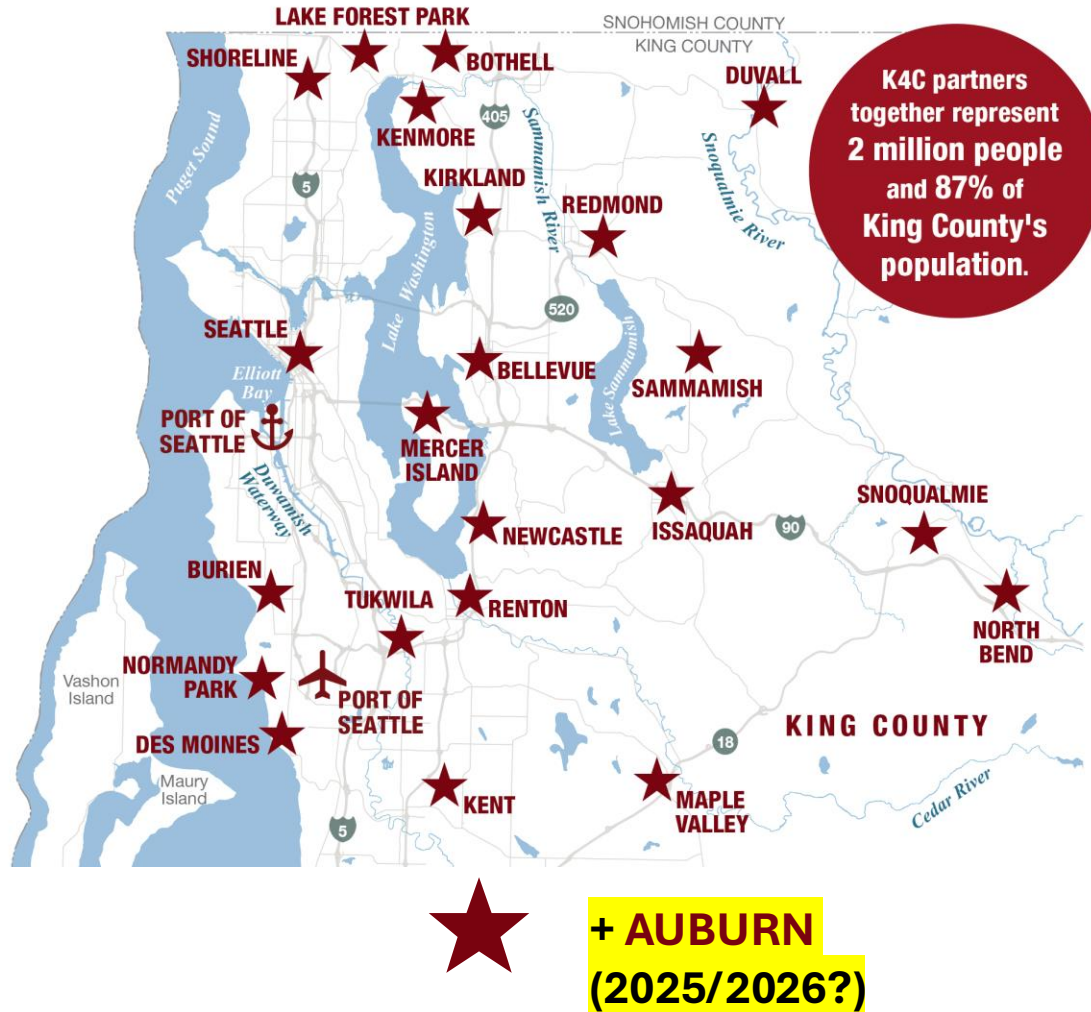
King County Extreme Heat
Mitigation Strategy (2024)



2025-2030 King County
Strategic Climate Action
Plan

City of Auburn Next Steps/ Future Opportunities

- Auburn exploring possibility of joining King County Cities Climate Collaboration (K4C)



CHAMP Future Opportunities



Heat Education: Print and distribute materials widely



Image: [LifeOJ](#)

Share Findings: Report and academic manuscripts are forthcoming; sessions with other jurisdictions



Policy Briefs: Work with PHSKC Policy team to summarize solutions (e.g., energy assistance)



Auburn CHAMPions: Workgroup members are a resource to the City of Auburn can for community-based work



Grant Writing: Continued support with data and technical assistance to both City and community grant writers

Image: [Paperpile](#)

Bradley Kramer, PhD, MPA
Public Health – Seattle & King County
bradley.kramer@kingcounty.gov

