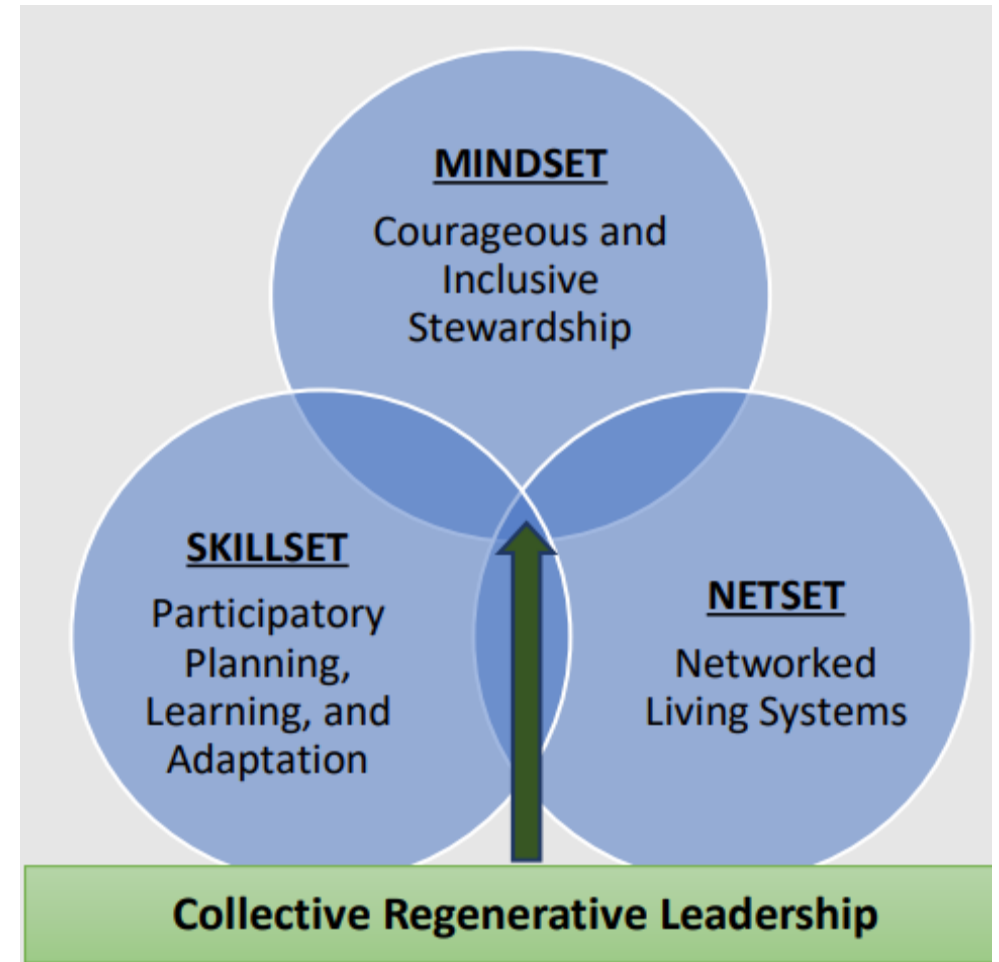


# Emerging Leaders in Public Health

PHEARLESS Initiative  
(Public Health Regenerative Leadership Synergy)

# What is Regenerative Leadership?

*“....a multifaceted approach that starts with an individual and collective mindset shift toward living systems and recognizes the complex interplay of social, economic, and environmental factors that shape the well-being of the complex adaptive system we call community.”*



# PHEARLESS Leadership Initiative

- Albuquerque, New Mexico
- Buffalo, New York
- Colorado City, Arizona
- Columbia, South Carolina
- Hillsborough, Florida
- Jackson County, Missouri
- Lee County, Mississippi
- Long Beach, California
- Minneapolis, Minnesota
- Mobile, Alabama
- New Orleans, Louisiana
- Philadelphia, Pennsylvania
- Saint Johnsbury, Vermont
- San Francisco, California
- Seattle, Washington





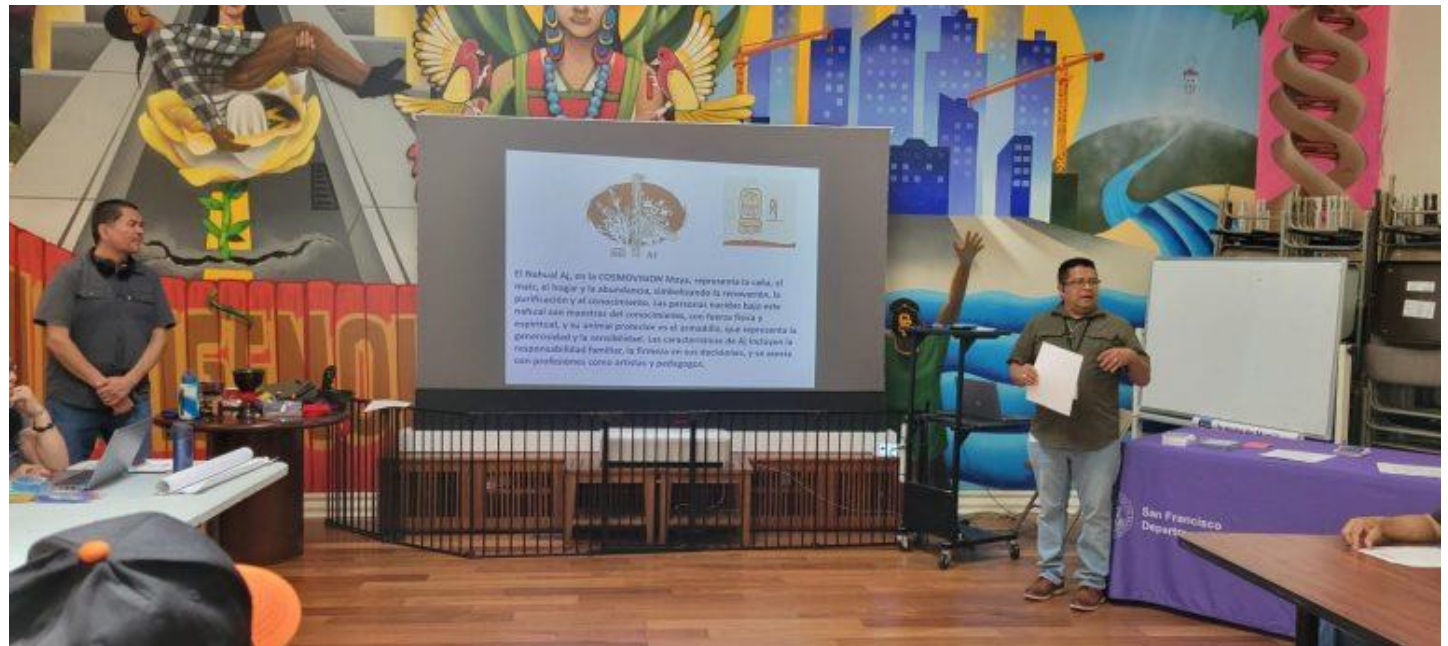


## What did we learn?

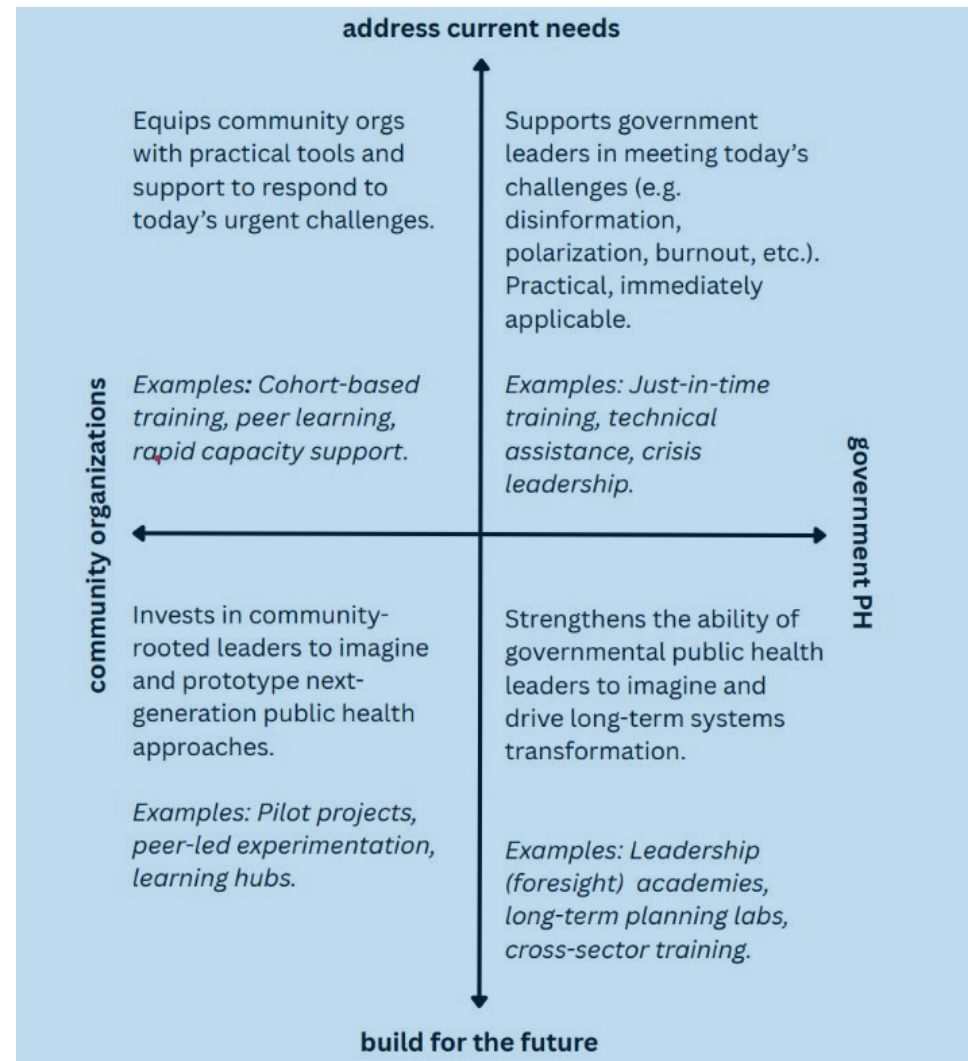
Increased leadership skills  
+ mindset

Strengthened  
relationships w/ collective  
members

Deepened engagement  
w/ local communities



## Phase 2 learning and future design





# Proposed future model

Progressive Sequence



Monica Valdes Lupi, JD, MPH  
Managing Director, Health Team





Please take this survey to evaluate conference sessions.



THANK YOU

THE  
KRESGE  
FOUNDATION

Expanding Equity and  
Opportunity in America's Cities